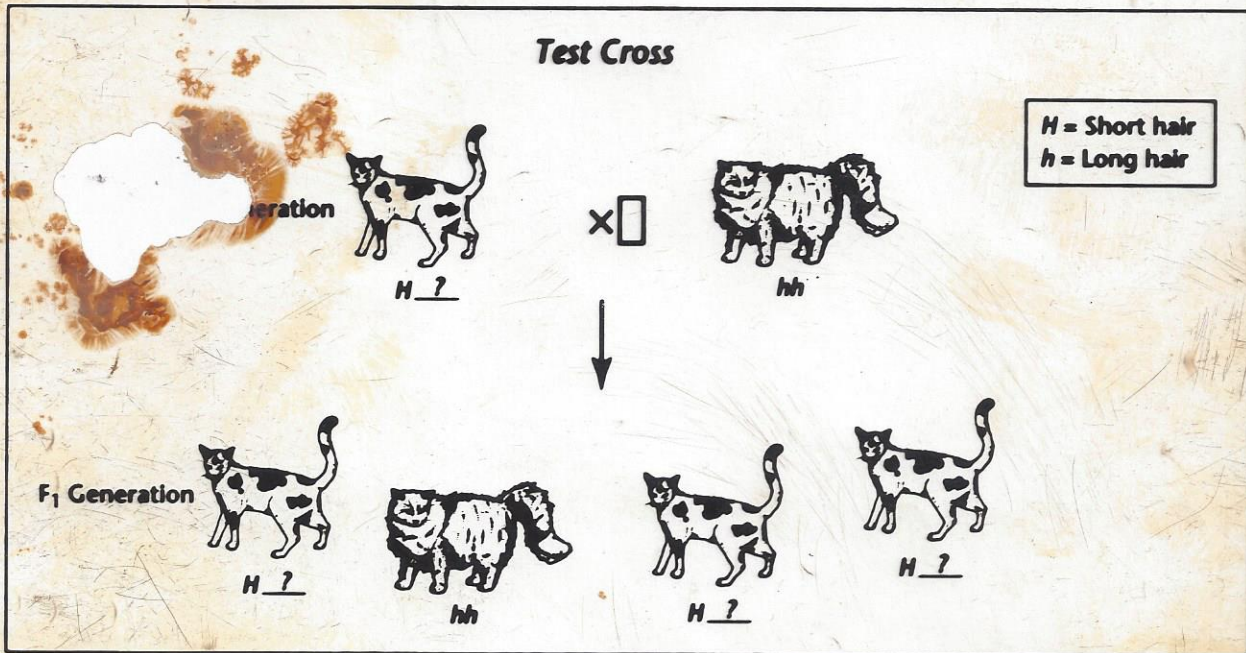


**SECTION 3-1**

**ENRICH**

# The Test Cross

When an organism has a trait controlled by a dominant allele, it can either be a hybrid or a purebred. To find out which, geneticists can use a test cross. In a test cross, the organism with the trait controlled by a dominant allele is crossed with an organism with a trait controlled by a recessive allele. If all offspring have the trait controlled by the dominant allele, then the parent is a purebred. If any offspring has the recessive trait, then the dominant parent is a hybrid. Study the test cross below, then answer the questions.



Answer the following questions on a separate sheet of paper.

1. Is the long-haired cat in the P generation a hybrid or a purebred? Explain your answer.
2. Is the short-haired cat in the P generation a hybrid or a purebred? Explain your answer.
3. If the short-haired cat in the P generation were purebred, what would you expect the offspring to look like?
4. In horses, the allele for a black coat (*B*) is dominant over the allele for a brown coat (*b*). A cross between a black horse and a brown horse produces a brown foal. Is the black horse a hybrid or a purebred? Explain.
5. In guinea pigs, the allele for a smooth coat (*S*) is dominant over the allele for a rough coat (*s*). Explain how you could find out whether a guinea pig with a smooth coat is a hybrid or a purebred.